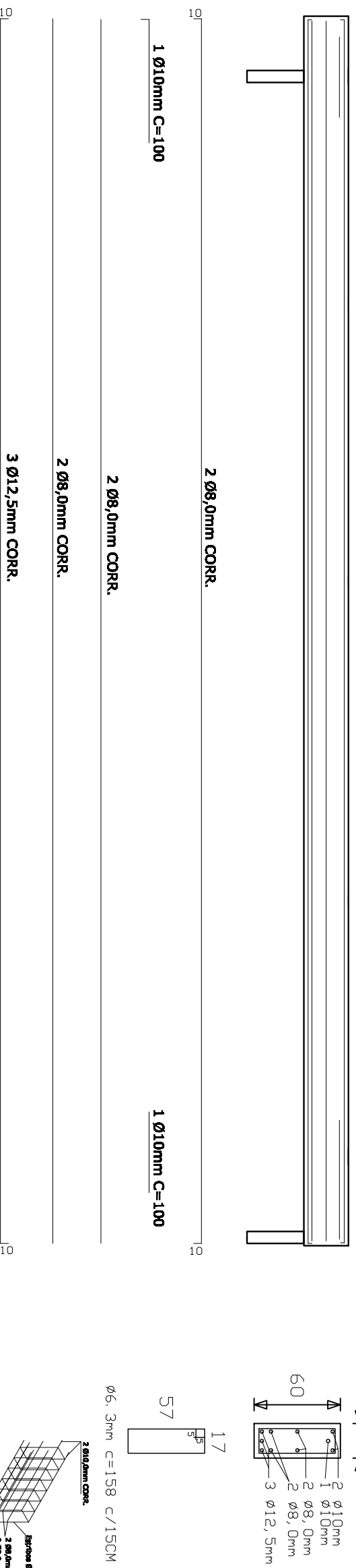
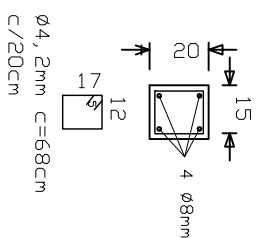


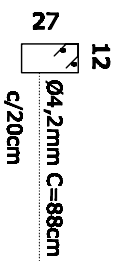
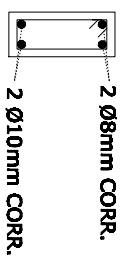
Detalhe: ARMADURA DAS V.I. DOS PÓRTICOS (20x60) 31X



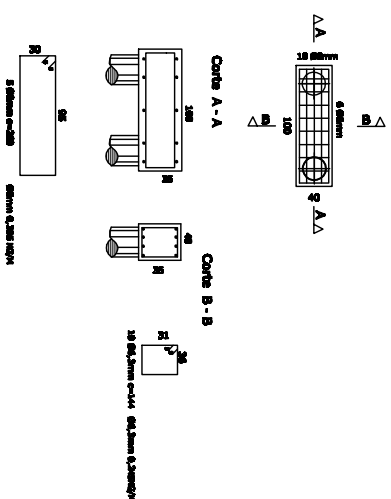
ARMADURA DOS PILARES 15X20



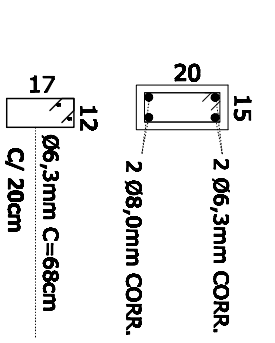
ARMADURA DAS V.B 15X30 (PAREDES A CONSTRUIR)



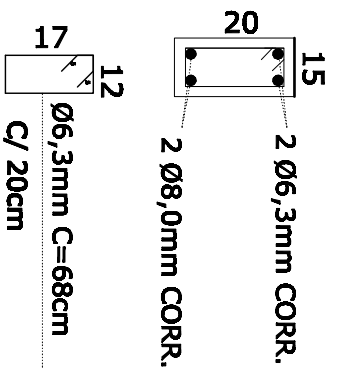
ARMADURA DOS BLOCOS 100x40x35



Detalhe: ARMADURA V.R PARED (15x20)

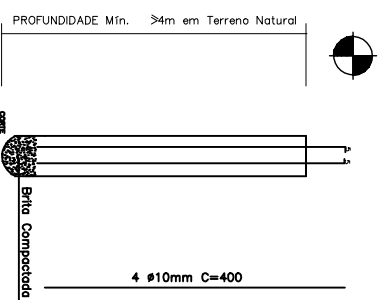


Detalhe: ARMADURA V.R (15x20)

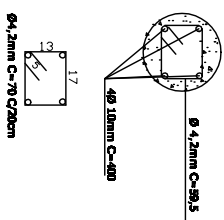


ARMADURAS DAS ESTACAS Ø25

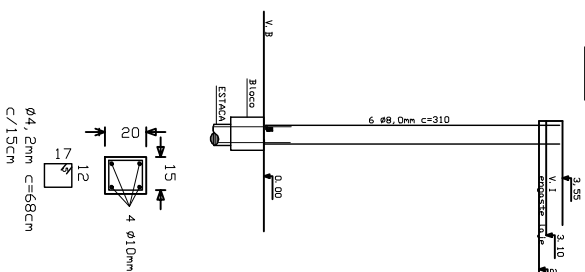
ESTACAS- Ø25cm



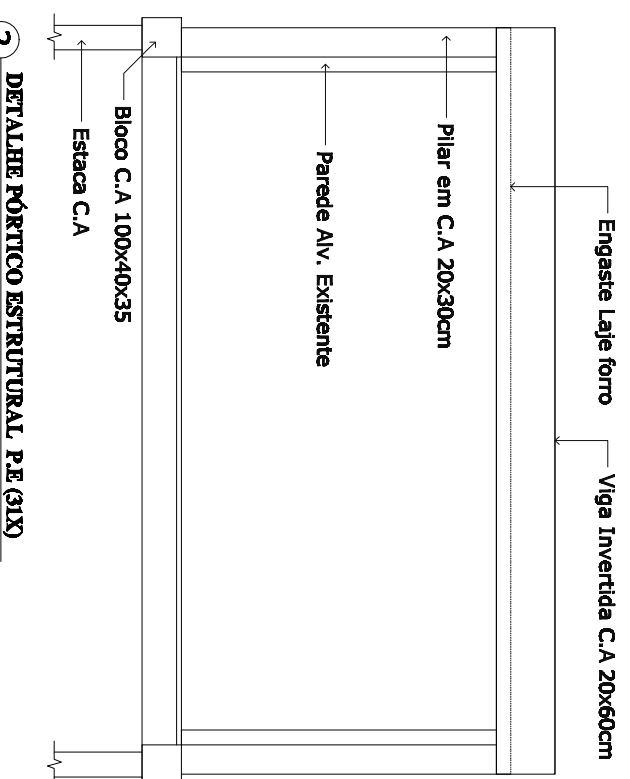
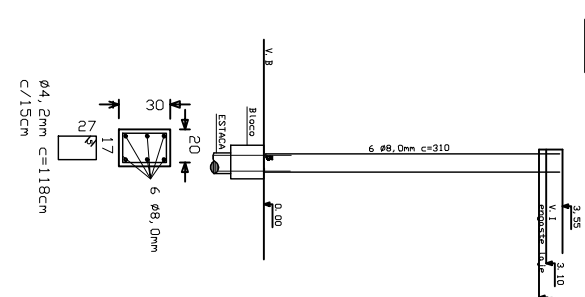
Estaca - Planta



ARMADURA DOS PILARES 15x20



ARMADURA DOS PILARES 20x30



2 DETALHE PÓRTICO ESTRUTURAL PE (31X)

TÍTULO: REFORMA DA ESCOLA PROF. MICHEL KAIRALLA	ENDEREÇO: RUA GUACURUS - VILA AMERICA	PROPRIETÁRIO: PREFEITURA MUNICIPAL DE ANDRÁ PR CNPJ: 76.235.761/0001-94	RESP. TÉCNICO: ANTONIO EDUARDO BONIFACIO ENG. CIVIL CREA 601664754	VISTO:	CONTEÚDO: DETALHES ESTRUTURAS	FOLHA: 07/13
DATA: SETEMBRO DE 2022						